

6R1080T

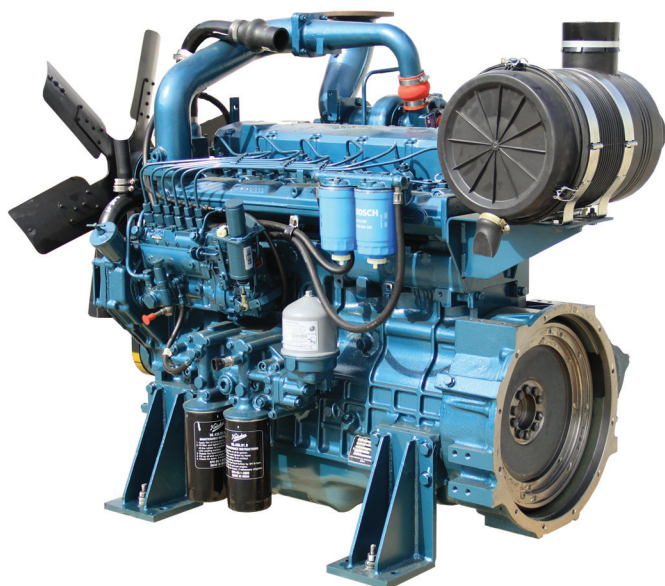


No. of Cyls.	Bore x Stroke (mm)	Displacement (cc)	Gross Power Output Rating as per ISO3046 at 1500 RPM bhp (kW)		Suitable Power Rating for Generator at 0.8 pf	
			Prime	Standby	Prime	Standby
6	105 x 125	6480	127 bhp (93.4 kW)	139.7 bhp (102.8 kW)	100 kVA	110 kVA

Engine Technical Data :

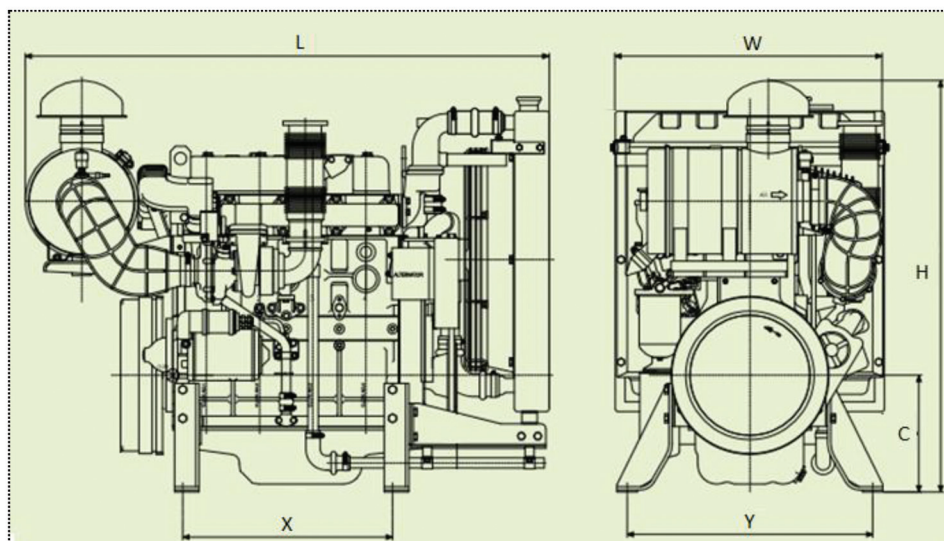
Physical Data		Fuel System	
Engine Make	Kirloskar	Type of fuel filter	Two stage spin on type
Engine Model	6R1080T	Governor Type	Mechanical
Number of cylinders	6	Class of Governing	ISO 3046 Class A1 & ISO 8528-5, Class G2
Configuration	Inline	Fuel pump type	Inline
Type	Four stroke	Fuel pump make	MICO - BOSCH
Bore x Stroke (mm)	105 x 125	Recommended Fuel	Class A2, High speed diesel
Displacement (cc)	6480	Specific fuel consumption gm/bhp-hr (gm/kW-hr)	150 (204)
Cooling	Water cooled	Fuel consumption at 100% load +5% tolerance (lit/hr)	25.07
Aspiration	Turbocharged	Fuel consumption at 75% load +5% tolerance (lit/hr)	18.81
Compression Ratio	17.6 : 1	Fuel consumption readings are based on diesel fuel with a specific gravity of 0.85 and conforming to BS 2869, Class A2)	
Starting Arrangement	12V Electric		
Air System		Lubrication System	
Air Filter Type	Dry type replaceable element	Type of lube oil filter	Full flow spin on type
Air Volume required for Ventilation (m³/hr)	9068	Oil to be used	Multi grade 15W40
Combustion air flow (m³/hr)	292	Oil pump type	Through G-rotor gear pump
Total Air Flow required for ventilation (m³/hr)	9781	Lub oil sump capacity (lit)	13.5
Total Fresh air required (m³/hr)	14325	Lube oil consumption	0.3% of fuel consumption
Cooling System		Electrical System	
Cooling system capacity (lit)	38	Starting Arrangement	12V Electric
Water pump type	Centrifugal	Starter	12V Electric
Radiator fan load (hp)	5.5	Starter Battery Rating	150 Amp-hr
		Battery charging alternator	Engine mounted 12V battery charger
		Battery charger amps	35

Power, Performance, Peace of Mind.



Features

- Designed for heavy duty applications
- Extremely reliable
- All service points like dipstick, lube oil filling, lube oil filter, fuel pump, injectors are on one side which is the cooler side. This adds to operator comfort.
- Lower operating cost
- Easy maintenance – higher uptime
- Superior design standards that minimize power deration even at high ambient temperatures.
- Winner of the Frost & Sullivan Voice of Customer Award in the "Best Bang for Buck" category in the Indian Generating sets Market.



Dimensions in mm					
L	W	H	C	X	Y
1707	952.5	1365	285	647	600

Weight Details	
Engine weight without radiator Gross / Net (kg)	930 / 820
Radiator and accessories weight Gross / Net (kg)	120 / 98

Coupling	
Flywheel	Suitable for SAE 11.5" disc
Housing	SAE3
Coupling disc	Not supplied

Add : No. 292 , South Saadi St , Tehran - IRAN
 Tel : (+9821) 3311 2133 - 3311 8527
 Fax : (+9821) 3390 1616
 E-mail : info@saadico.com - saadico@gmail.com

