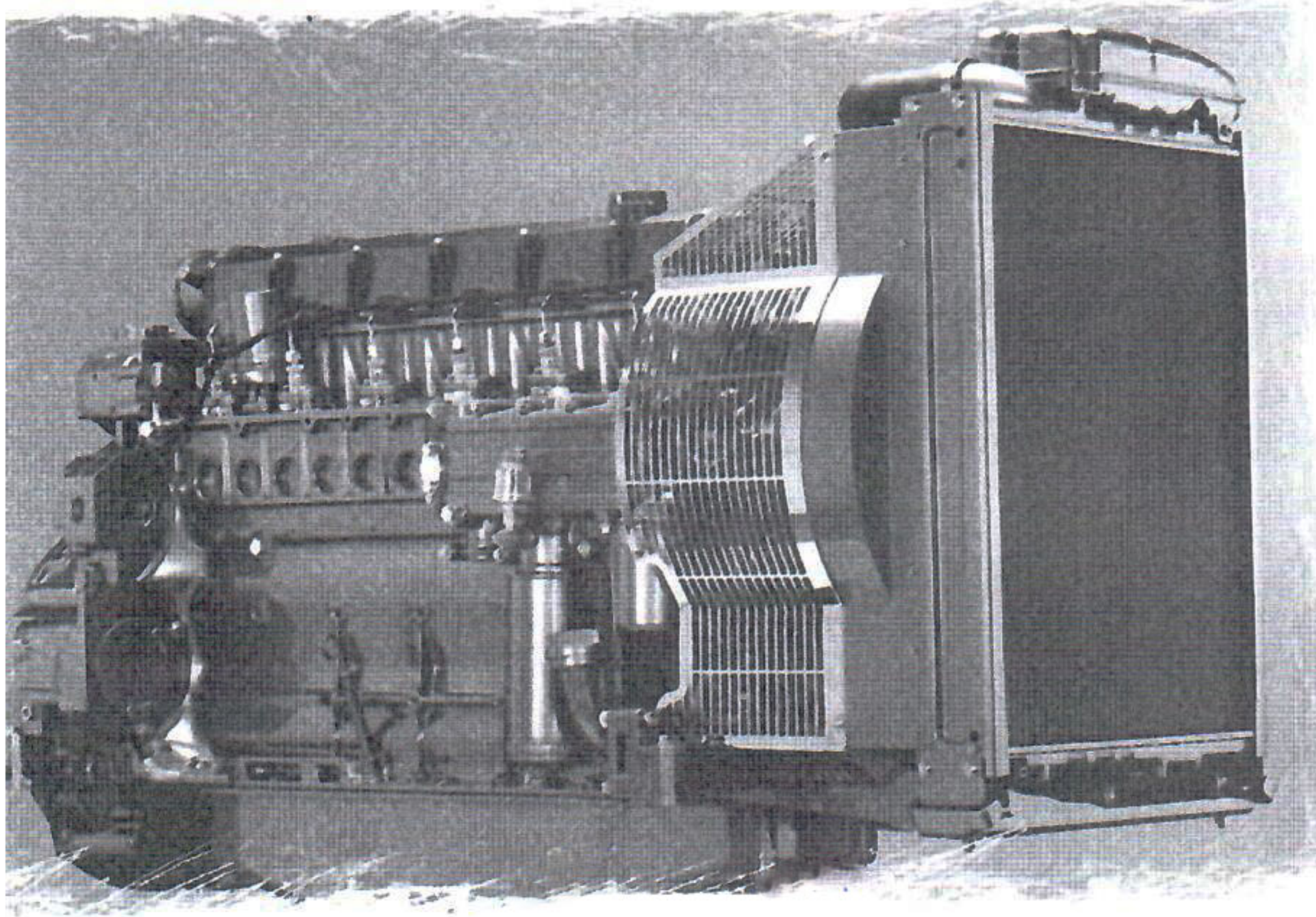


Technical Data.



Engine Type	Cyl. and config.	Net flywheel power (kW acc. to ISO 3046)						typ. gen efficiency %	Bore / Stroke mm	Displacement l	Dimensions			Weight kg
		50 Hz / 1500 rpm			60 Hz / 1800 rpm						Length mm	Width mm	Height mm	
		COP ①	PRP ②	LTP ③	COP ④	PRP ⑤	LTP ⑥							

Diesel Engines

F2M1008F	2 IL	5.0	5.2	5.5	5.9	6.2	6.5	0.90	75 / 77.6	0.686	561	450	591	95	
F3M1008F	3 IL	7.7	8.1	8.5	9.0	9.5	10.0	0.90	75 / 77.6	1.028	680	491	637	108	
F4M1008F	4 IL	9.9	10.5	11.0	11.7	12.4	13.0	0.90	75 / 77.6	1.372	763	491	637	123	
BF4M1008	4 IL	11.6	12.2	12.9	13.7	14.4	15.2	0.90	72 / 75	1.22	763	531	637	131	
F3L1011F	3 IL	16.0	17.0	18.0	20.5	22.0	23.0	0.90	91 / 105	2.05	611	456	678	208	
F4L1011F	4 IL	21.5	22.5	24.0	27.5	29.0	31.0	0.90	91 / 105	2.73	722	501	702	250	
BF4L1011F	4 IL	28.5	31.0	32.0	36.0	38.0	40.0	0.90	91 / 105	2.73	722	501	702	257	
F3M1011F	3 IL	16.8	17.6	18.6	21.3	22.4	23.6	0.90	91 / 112	2.18	905	627	696	285	
F4M1011F	4 IL	23.4	24.5	25.8	29.2	31.0	32.0	0.90	91 / 112	2.91	1032	629	740	320	
BF4M1011F	4 IL	33.0	34.0	36.0	40.0	42.0	44.0	0.90	91 / 112	2.91	1034	629	781	342	
F3L912	3 IL	26.5	27.5	28.0	31.0	32.0	33.0	0.93	100 / 120	2.83	719	690	808	351	
F4L912	4 IL	35.0	37.0	38.0	42.0	44.0	45.0	0.93	100 / 120	3.77	749	690	793	402	
F6L912	6 IL	53.0	55.0	56.0	63.0	66.0	67.0	0.93	100 / 120	5.66	1.142	690	803	541	
BF6L913	6 IL	88.0	92.0	97.0	106.0	110.0	116.0	0.93	102 / 125	6.13	1.183	704	866	585	
BF6L913C	6 IL	114.0	119.0	125.0	137.0	144.0	151.0	0.93	102 / 125	6.13	1.387	704	877	610	
BF4M1012E	4 IL	49.0	51.0	54.0	54.0	56.0	59.0	0.93	94 / 115	3.19	1.069	612	859	430	
BF4M1012EC	4 IL	61.0	64.0	67.0	67.0	70.0	74.0	0.93	94 / 115	3.19	1.129	736	908	460	
BF4M1013E	4 IL	75.0	78.0	83.0	81.0	85.0	89.0	0.93	108 / 130	4.76	1.177	652	952	545	
BF4M1013EC	4 IL	88.0	93.0	98.0	100.0	105.0	110.0	0.93	108 / 130	4.76	1.316	739	1.001	570	
BF6M1013E	6 IL	114.0	120.0	126.0	122.0	128.0	134.0	0.93	108 / 130	7.15	1.462	678	1.052	680	
BF6M1013EC	6 IL	135.0	142.0	149.0	146.0	155.0	163.0	0.93	108 / 130	7.15	1.602	866	1.140	735	
BF6M1015	6 V	195.0	210.0	231.0	211.0	228.0	250.0	0.95	132 / 145	11.9	976	932	1164	920	
BF6M1015C	6 V	250.0	285.0	345.0	271.0	310.0	341.0	0.95	132 / 145	11.9	976	932	1172	920	
BF6M1015CP	6 V	303.0	338.0	365.0	320.0	351.0	384.0	0.95	132 / 145	11.9	976	932	1172	920	
BF8M1015	8 V	235.0	254.0	279.0	255.0	276.0	290.0	0.95	132 / 145	11.9	1190	940	1164	1120	
BF8M1015C	8 V	333.0	380.0	459.0	362.0	413.0	454.0	0.95	132 / 145	15.9	1190	940	1172	1120	
BF8M1015CP	8 V	399.0	448.0	490.0	426.0	473.0	517.0	0.95	132 / 145	15.9	1190	940	1172	1120	
TBD616 V8	8 V	384.0	441.0	463.0	432.0	476.0	515.0	0.96	132 / 160	17.5	1178	1328	1581	1550	
TBD616 V12	12 V	576.0	662.0	695.0	648.0	714.0	772.0	0.96	132 / 160	26.3	1514	1328	1635	2300	
TBD616 V16	16 V	768.0	882.0	926.0	864.0	950.0	1030.0	0.96	132 / 160	35.0	1858	1504	1720	2600	
TBD620 V8	8 V	880.0	922.0	968.0	960.0	1008.0	1056.0	0.96	170 / 195	35.4	1950	1390	2035	3500	
TBD620 V12	12 V	1320.0	1384.0	1452.0	1440.0	1512.0	1584.0	0.96	170 / 195	53.1	2700	1500	2180	4900	
TBD620 V16	16 V	1760.0	1844.0	1936.0	1920.0	2016.0	2112.0	0.96	170 / 195	70.8	3200	1.500	2.180	6.600	
		50 Hz / 3000 rpm						60 Hz / 3600 rpm							
F2M1008F	2 IL	10.4	10.9	11.5	10.8	11.4	12.0	0.90	75 / 77.6	0.686	561	450	591	95	
F3M1008F	3 IL	14.9	15.7	16.5	15.8	16.6	17.5	0.90	75 / 77.6	1.028	680	491	637	108	
F4M1008F	4 IL	20.7	21.9	23.0	21.6	22.8	24.0	0.90	75 / 77.6	1.372	763	491	637	123	
BF4M1008	4 IL	23.6	24.8	26.2	24.5	25.8	27.5	0.90	72 / 75	1.22	763	531	637	131	
F2L1011F	2 IL	20.0	21.0	22.0	-	-	-	0.90	91 / 105	1.37	500	456	678	167	
F3L1011F	3 IL	30.0	31.0	33.0	-	-	-	0.90	91 / 105	2.05	611	456	678	208	
F4L1011F	4 IL	40.0	42.0	44.0	-	-	-	0.90	91 / 105	2.73	722	501	702	250	
BF4L1011F	4 IL	48.0	50.0	53.0	-	-	-	0.90	91 / 105	2.73	722	501	702	257	
F3M1011F	3 IL	30.8	32.4	34.1	-	-	-	0.90	91 / 112	2.18	905	627	696	285	
F4M1011F	4 IL	42.0	44.0	46.0	-	-	-	0.90	91 / 112	2.91	1032	629	740	320	